



**DOCUMENT TECHNIQUE &
SCHÉMAS DE PRÉSENTATION
DE LA SMAC DU PETIT FAUCHEUX**

12 rue Léonard de Vinci
37 000 Tours

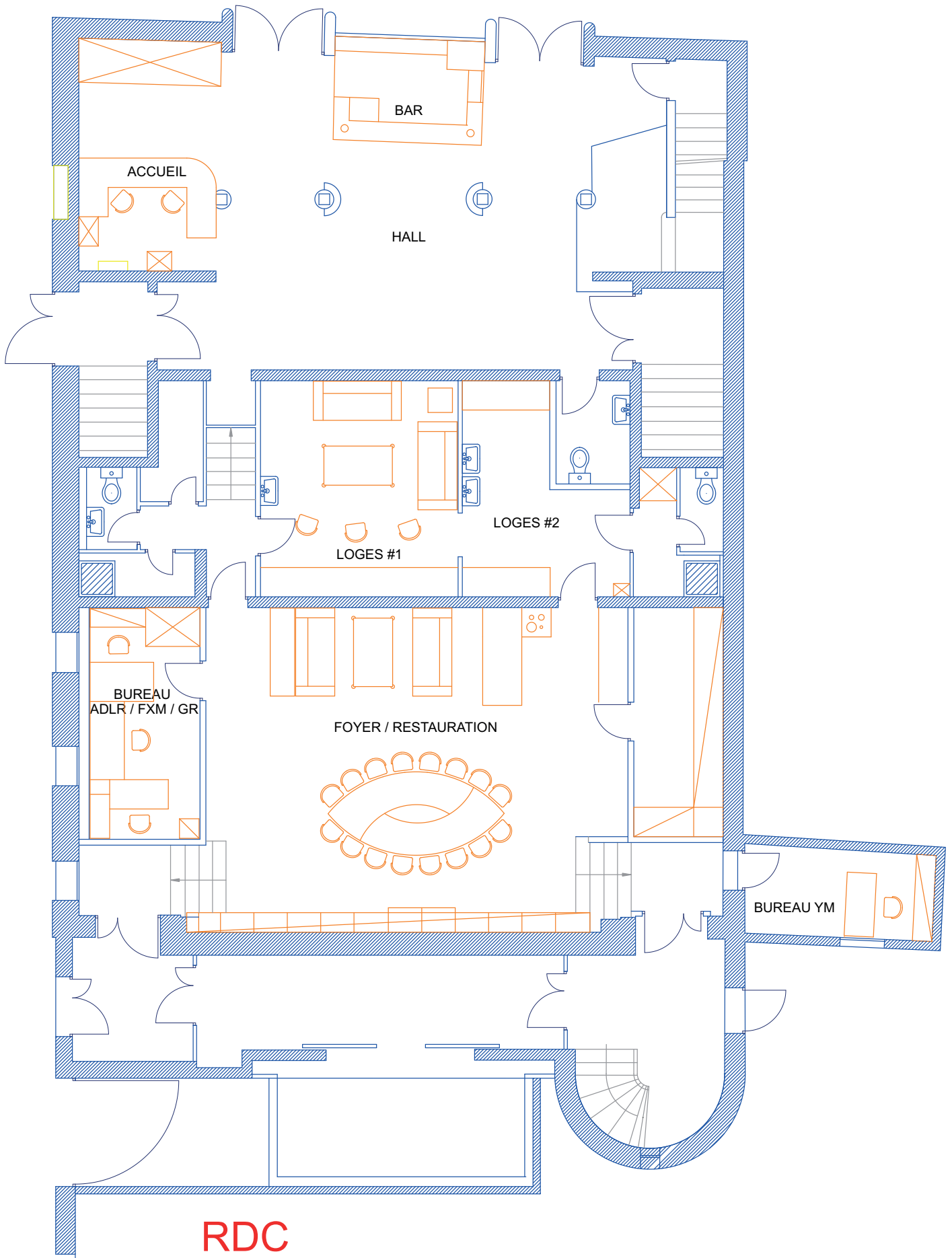
ORGANISATION DU DOCUMENT

- P2. Plan rez de chaussée
- P3. Plan de la salle et de la scène
- P4. Plan de coupe
- P5. Plan lumière
- P6. et 7 Plan de feu habituel

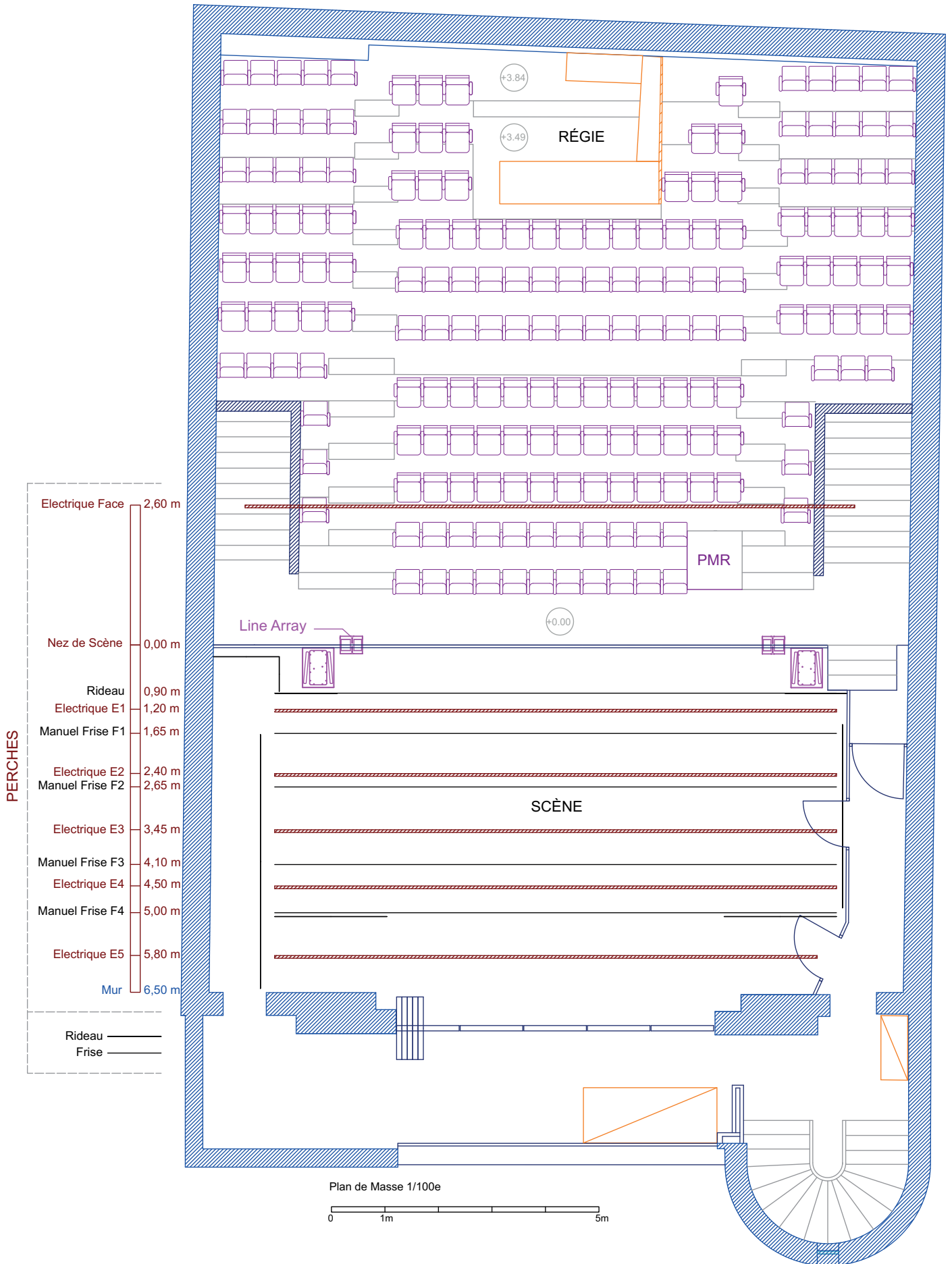
Contact

**RÉGISSEUR GÉNÉRAL Guillaume
RIGUET**

petitfauchaux@me.com
02 47 38 91 19



RDC



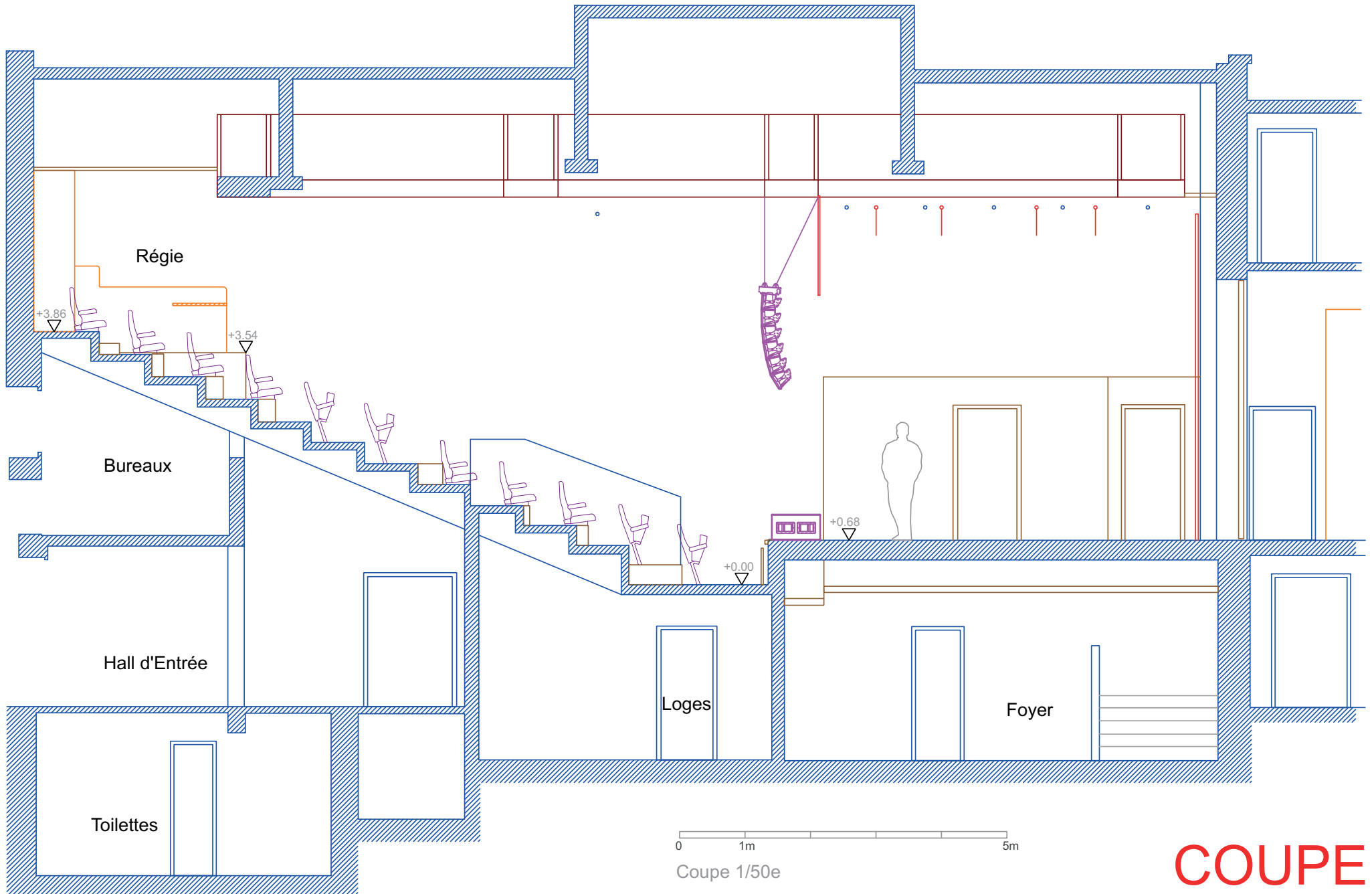
- PERCHES**
- Electrique Face 2,60 m
 - Nez de Scène 0,00 m
 - Rideau 0,90 m
 - Electrique E1 1,20 m
 - Manuel Frise F1 1,65 m
 - Electrique E2 2,40 m
 - Manuel Frise F2 2,65 m
 - Electrique E3 3,45 m
 - Manuel Frise F3 4,10 m
 - Electrique E4 4,50 m
 - Manuel Frise F4 5,00 m
 - Electrique E5 5,80 m
 - Mur 6,50 m

Rideau ———
 Frise ———

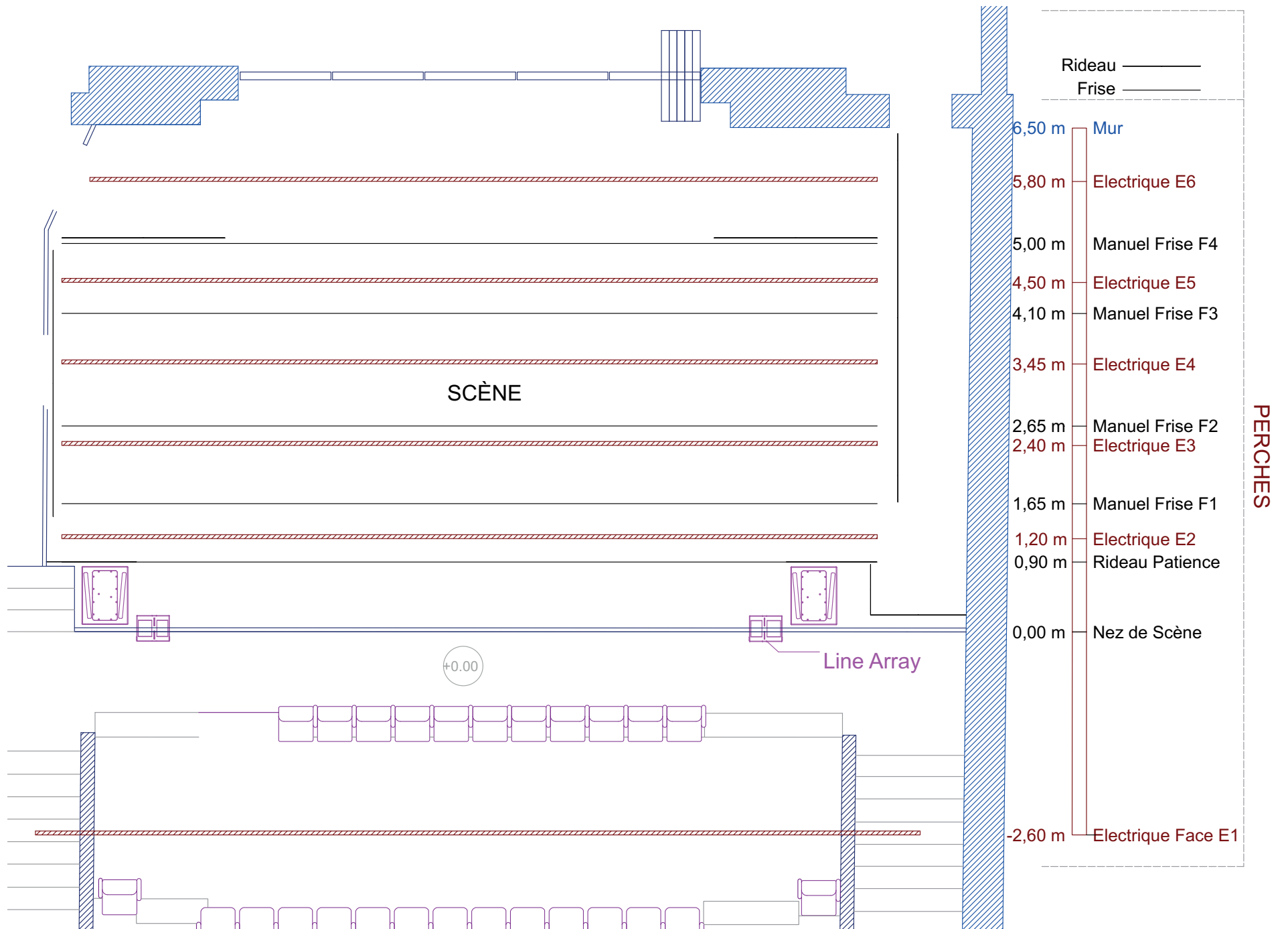
Plan de Masse 1/100e

0 1m 5m

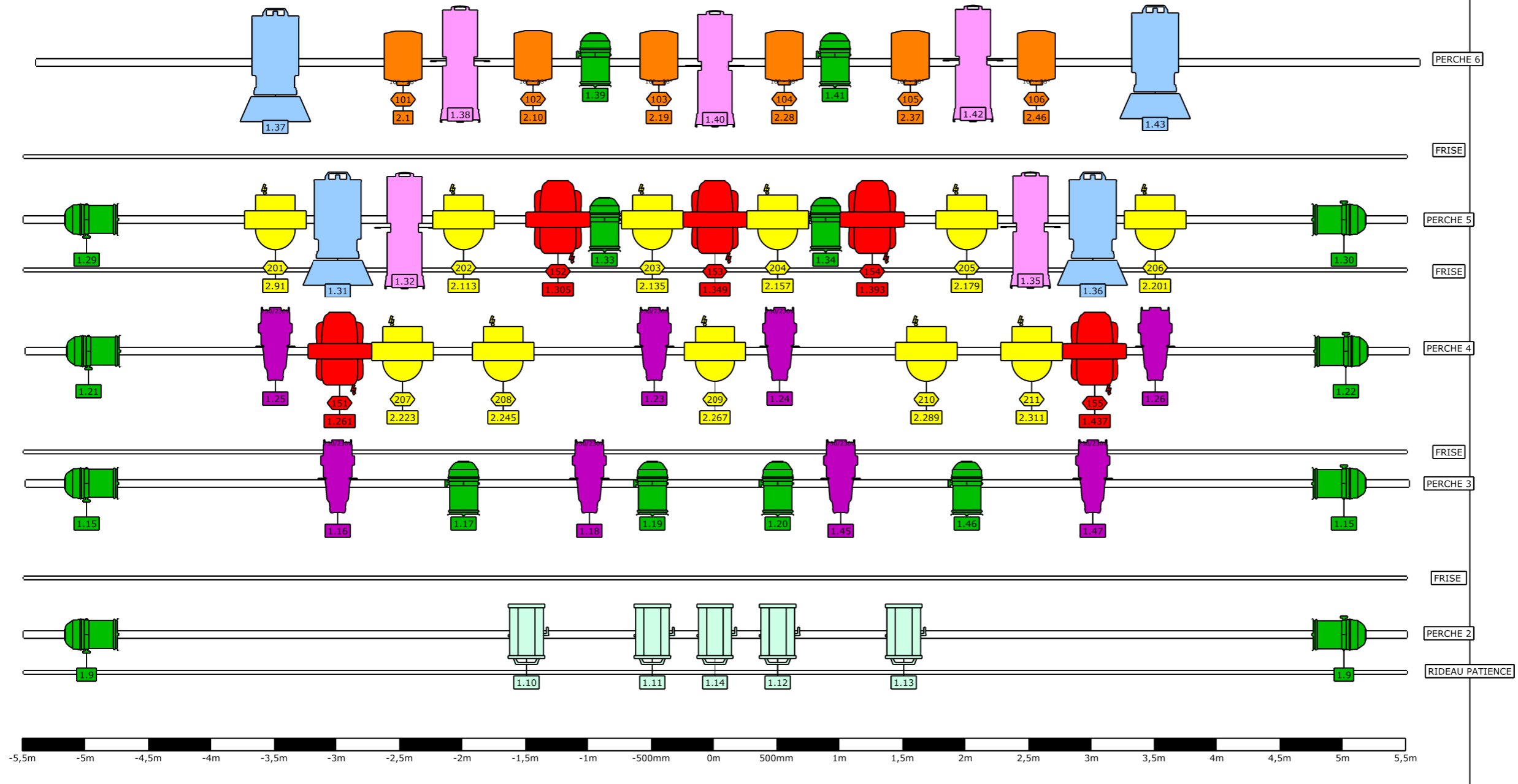
SALLE +1 / SCÈNE






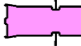


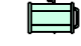


COUPE

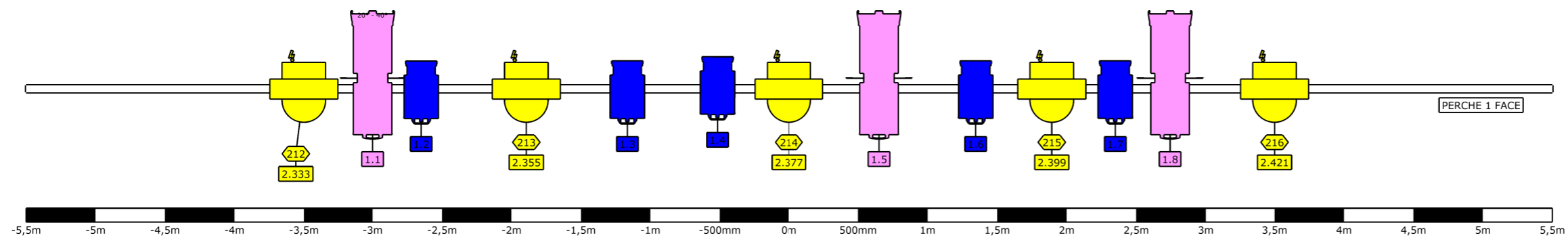


VUE DE DESSUS

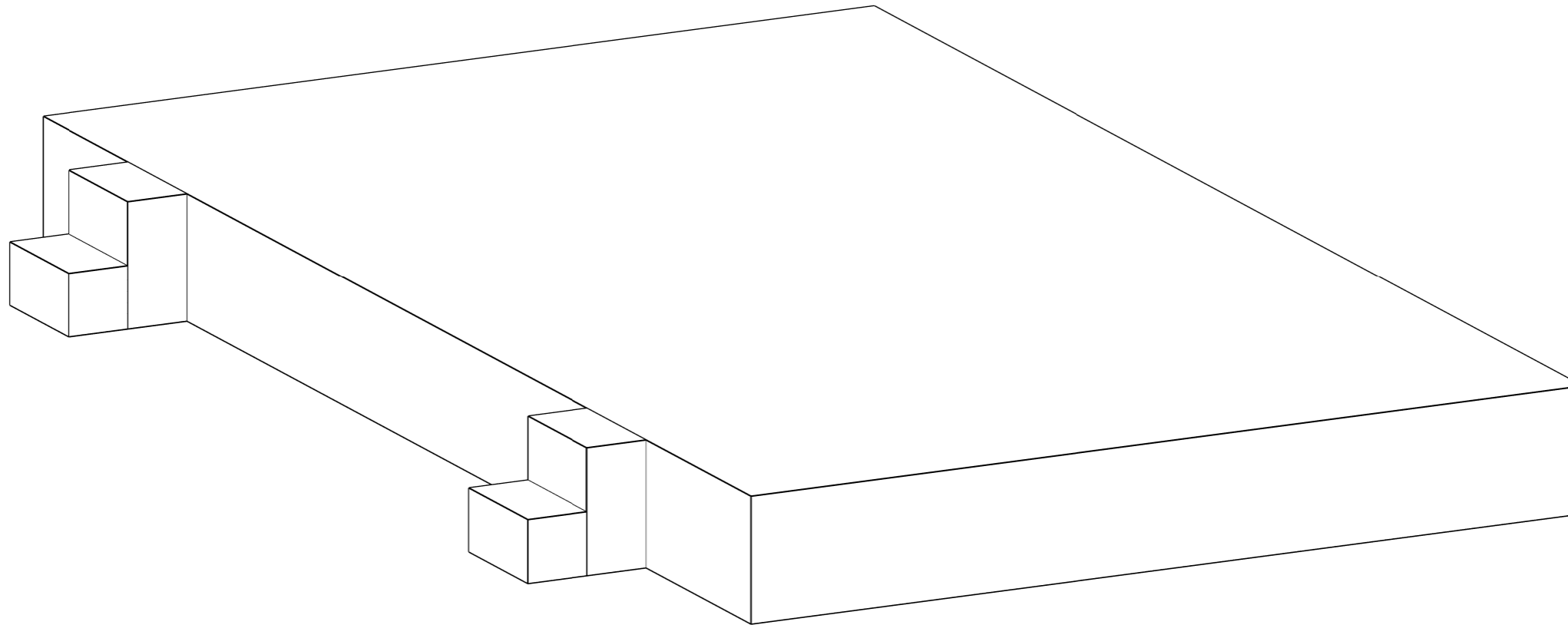
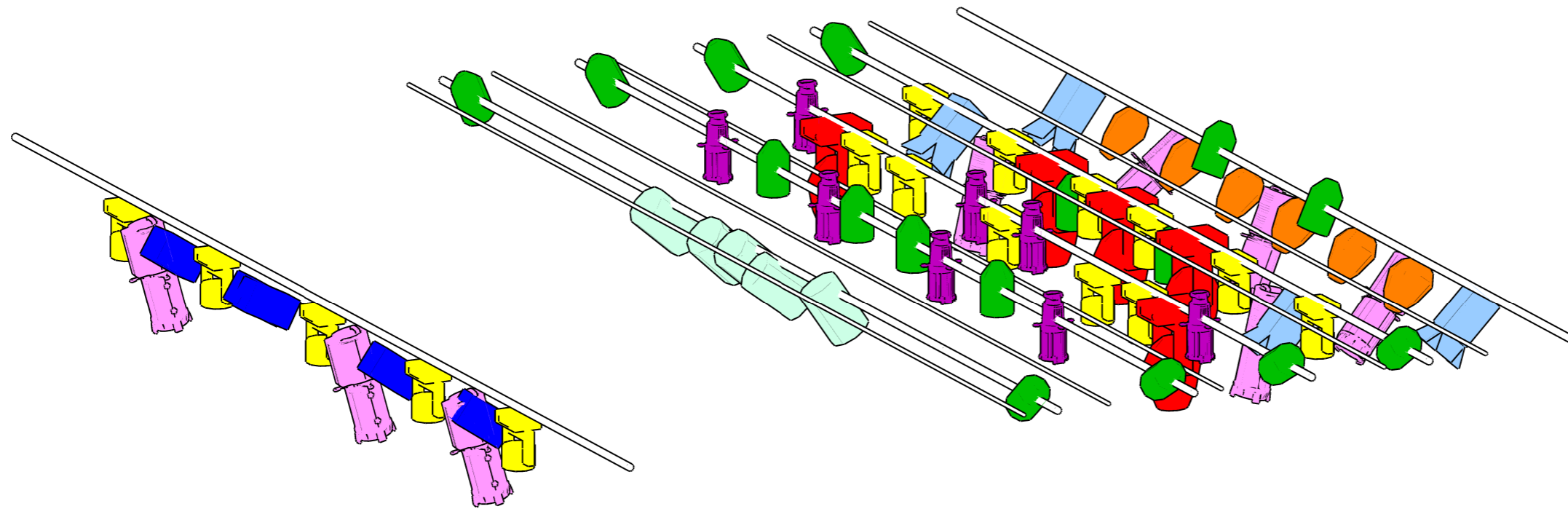


LEGENDE




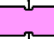





-  Par 64 CP 62 (16)
-  ROBE 150LEDBEAM (16)
-  DECOUPE ETC 25°-50° ETC (8)
-  DECOUPE 614 SX (8)
-  RUSH PAR ZOOM MARTIN (6)
-  SPOT ROBIN PAINTE (5)
-  PC 500 ADB (5)
-  310 HPC (5)
-  PC 2000 RJ avec volets (4)



VUE ISOMETRIQUE



LEGENDE

-  Par 64 CP 62 (16)
-  ROBE 150LEDBEAM (16)
-  DECOUPE ETC 25°-50° ETC (8)
-  DECOUPE 614 SX (8)
-  RUSH PAR ZOOM MARTIN (6)
-  SPOT ROBIN PAINTE (5)
-  PC 500 ADB (5)
-  310 HPC (5)
-  PC 2000 RJ avec volets (4)